

## CTCF (R339W)

**Catalog Number:** 26326

**Gene Symbol:** CTCF; MRD21

**Description:** Anti-CTCF (R339W) Mouse Monoclonal Antibody

**Background:** Transcriptional repressor

CTCF also known as 11-zinc finger protein or CCCTC-binding factor is a transcription factor that in humans is encoded by the CTCF gene. CTCF is involved in many cellular processes, including transcriptional regulation, insulator activity, recombination and regulation of chromatin architecture.

**Immunogen:** A synthetic peptide from the internal region of CTCF which includes the mutation of R339W, human origin.

**Tested applications:** ELISA, WB, IHC

**Recommended dilutions:**

ELISA: 1:1000-1:5000

WB: 1:500-1:1000

IHC: 1:50-1:100

**Concentration:** 1 mg/ml

**Host:** Mouse

**Clonality:** Monoclonal

**Purity:** Purified from ascites

**Format:** Liquid

**Storage buffer:**

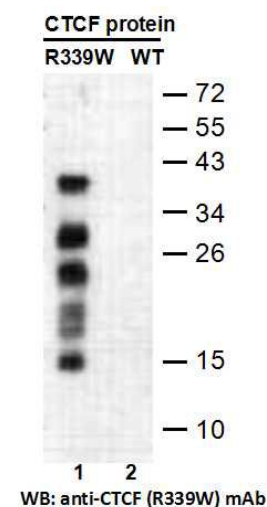
Preservative: no

Constituents: PBS (without  $Mg^{2+}$  and  $Ca^{2+}$ ), pH 7.4, 150 mM NaCl, 50% glycerol

**Species Reactivity:** Recognizes R339W mutant, but not wild-type CTCF of vertebrates.

**Storage Conditions:** Store at  $-20^{\circ}C$ . Avoid freeze / thaw cycles.

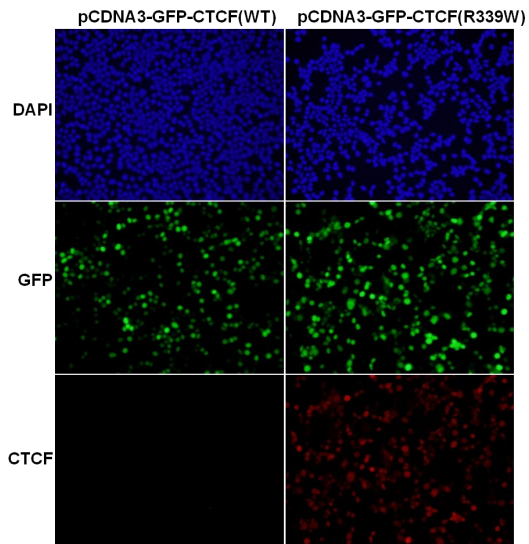
**Western blot:**



**Western blot analysis of recombinant CTCF (R339W) and wild-type proteins.**

Purified His-tagged CTCF (R339W) protein (lane 1) and corresponding wild-type protein (lane 2) were blotted with anti-CTCF (R339W) monoclonal antibody (Cat. #26326).

**Immunofluorescence:**



**Immunofluorescence of cells expressing CTFC proteins with anti-CTCF (R339W) antibody.**

HEK293T cells were transfected with pCDNA3-GFP-CTCF (WT) plasmid (left column) or pCDNA3-GFP-CTCF (R339W) plasmid (right column), then fixed and stained with anti-CTCF (R339W) monoclonal antibody (Cat. #26326).